

Technology chosen by 50 OEMs

ATA Spec 2000 Ch. 9-5 – TDS 1.11
Printable on standard printer

AIRBUS & BOEING Compliant

APPLICATIONS

FLYtag® selected by Airbus for the A350 XWB's first RFID parts marking program, has become the standard for the aviation industry. FLYtags are designed for identification and maintenance, repair and overhaul tracking applications throughout the civil and military aircraft and aerospace industries.

ORDER CODE

FLYplug® up-to 3 Printers 12415

Related products

[Laser engraving unit RP130-ATA EU](#) 12427

[Laser engraving unit RP130-ATA US](#) 12428

[FLYtag® skin Small 2 Kbits](#) 12419

[FLYtag® skin Small 64 Kbits](#) 12420

[FLYtag® skin Medium 2 Kbits](#) 12421

[FLYtag® skin Medium 64 Kbits](#) 12422

[FLYtag® skin Large 2 Kbits](#) 12423

[FLYtag® skin Large 64 Kbits](#) 12424



ORACLE
Validated Integration
Oracle E-Business Suite

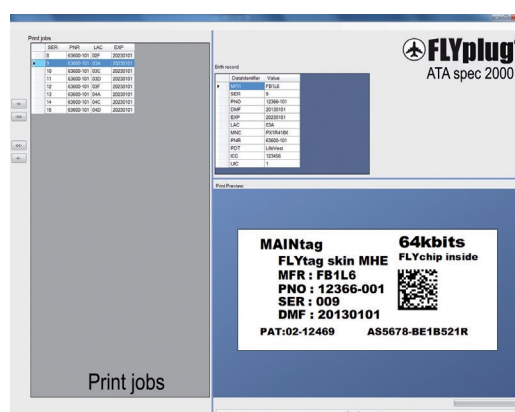
SAP Certified
Integration with SAP Applications

ENTERPRISE RFID PRINTING SOLUTION For ATA Spec 2000 RFID Parts Marking Programs

FLYplug is a global integrated printing/encoding enterprise package solution based on an ATA Spec 2000 specific distribution package of one of the most popular open AIDC (Automatic Identification and Data Collection) software worldwide. FLYplug solution helps ACs/OEMs or MROs to switch from Label/Name-plate to RFID. FLYplug package is a the perfect solution for fast and low-cost printing/markung & encoding RIFD integrated label stand-alone as well as network implementation including:

- Integration service package
- FLYplug's AIDC Enterprise Software ATA Spec 2000 distribution package license
- Commissioning & Training

FLYplug drives innovation in emerging technology by standardizing software and liberating resources. In fact, the first Auto ID solutions in the Industry were built on open technology. And these same open technologies are defining the future of Aircraft Auto-ID. Using on field customization Service based on an intuitive "wizards," to allow easy design of custom forms with data entry and/or web based templates. FLYplug package can read from most Databases (ODBC, OLE DB and even non-Windows such as AS/400, Sap, LINUX, Oracle ...), spreadsheets or texts. Launch of "print/encode jobs" direct from the platform, TCP/IP sockets, emails, files or other trigger event. FLYplug package solution is what the OEMs are expecting to switch smoothly from labeling to ATA spec2000 RFID marking not investing in a costly IT project.



FEATURES

Powerful, Flexible Data Retrieval

Select data using the simplest pick list or the most sophisticated SQL query. The Query screen offers a simple way to define complex searches.

Read from Most Databases

FLYplug's AIDC Enterprise Software ATA Spec 2000 distribution package makes it easy to access text, spreadsheets, and databases. This includes ODBC and OLE DB support for dozens of data formats – even non- Windows platforms such as LINUX, AS/400, Oracle database, and more. Supports also live design-time data view and print-time data merging.

Event Handling and Job Logging

To support security audits and ensure that automated print jobs succeeded, the Automation editions provide extremely detailed logging of print job information, template images, warnings and errors to SQL databases.

Alert Messages Reduce Downtime

Automatic e-mails of warnings and errors tell you about problems immediately.

Transparent Operation from within Other Software

Control FLYplug's AIDC Enterprise Software ATA Spec 2000 distribution package from within your other software, users don't even have to know that it's really doing the printing. Automatically process XML print requests from Oracle's WMS and MSCA applications. Certified interface to the SAP Auto-ID Infrastructure (All) of the NetWeaver platform. SAP IDocs are also supported. Process XML print requests from IBM Sensor Events (formerly Premises Server and Premises RFID Server) and return print status.

"Trigger-Based" Integrations

The FLYplug's AIDC Enterprise Software ATA Spec 2000 distribution package integrated light middleware utility allows programs that can't directly control to launch print jobs anyhow. Trigger using files, e-mails, serial ports, or TCP/IP sockets. The light middleware utility then "wakes up", which reads the data and generates "print-job". Although, running on Windows, it doesn't care about the operating system from which triggering events originate.

The Automation editions provide Microsoft ActiveX support for even the most advanced integration challenges.

The FLYplug's AIDC Enterprise Software ATA Spec 2000 distribution package supports the return of job status information to controlling applications.

.NET SDKs Simplify Integration

Instead of writing custom integrations from scratch, prewritten VB and C# code could be used in custom ".NET" software development kits to finish the job much faster.

- Print SDK/ Print Server SDK: Controls one or multiple units at a time.
- Sample Web Application: A sample ASP.NET application for web browser printing.

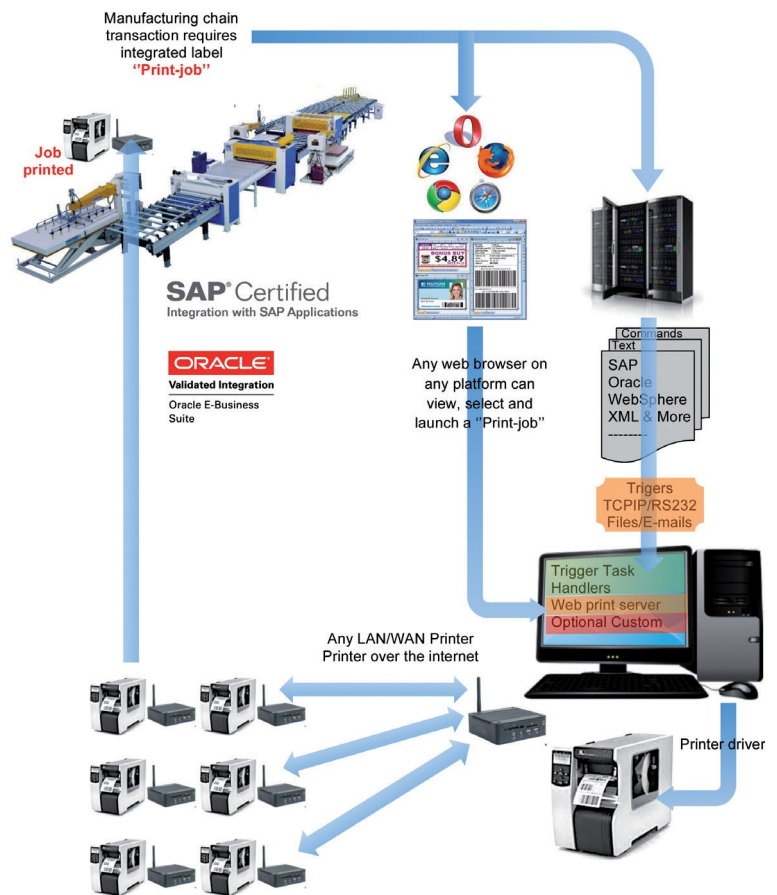
Centralized Printing Options

The FLYplug's AIDC Enterprise Software ATA Spec 2000 distribution lets numerous network users specify, launch and route print jobs for processing by a single copy of the distribution.

Operational temp. Exporting Printer Code

In addition to printing directly, the FLYplug's AIDC Enterprise Software ATA Spec 2000 distribution can also export specially formatted Printer Code Templates for modification and output by other programs. This code can also be downloaded to various hardware devices. Uses include:

- XML Enabled Printer configuration and template download.
- Key Pad Devices that attach directly to printers.
- SAP Integrations that use SAPscript-ITF.
- Custom Programs for any OS (both mobile and desktop).



ORACLE
Validated Integration
Oracle E-Business Suite

SAP Certified
Integration with SAP Applications



MAINTag – Groupe TXCOM

Parc d'affaires NOVEOS - 10 Avenue Descartes - 92350 Le Plessis Robinson - France

© 2018 MAINTag - www.maintag.com - support@maintag.com